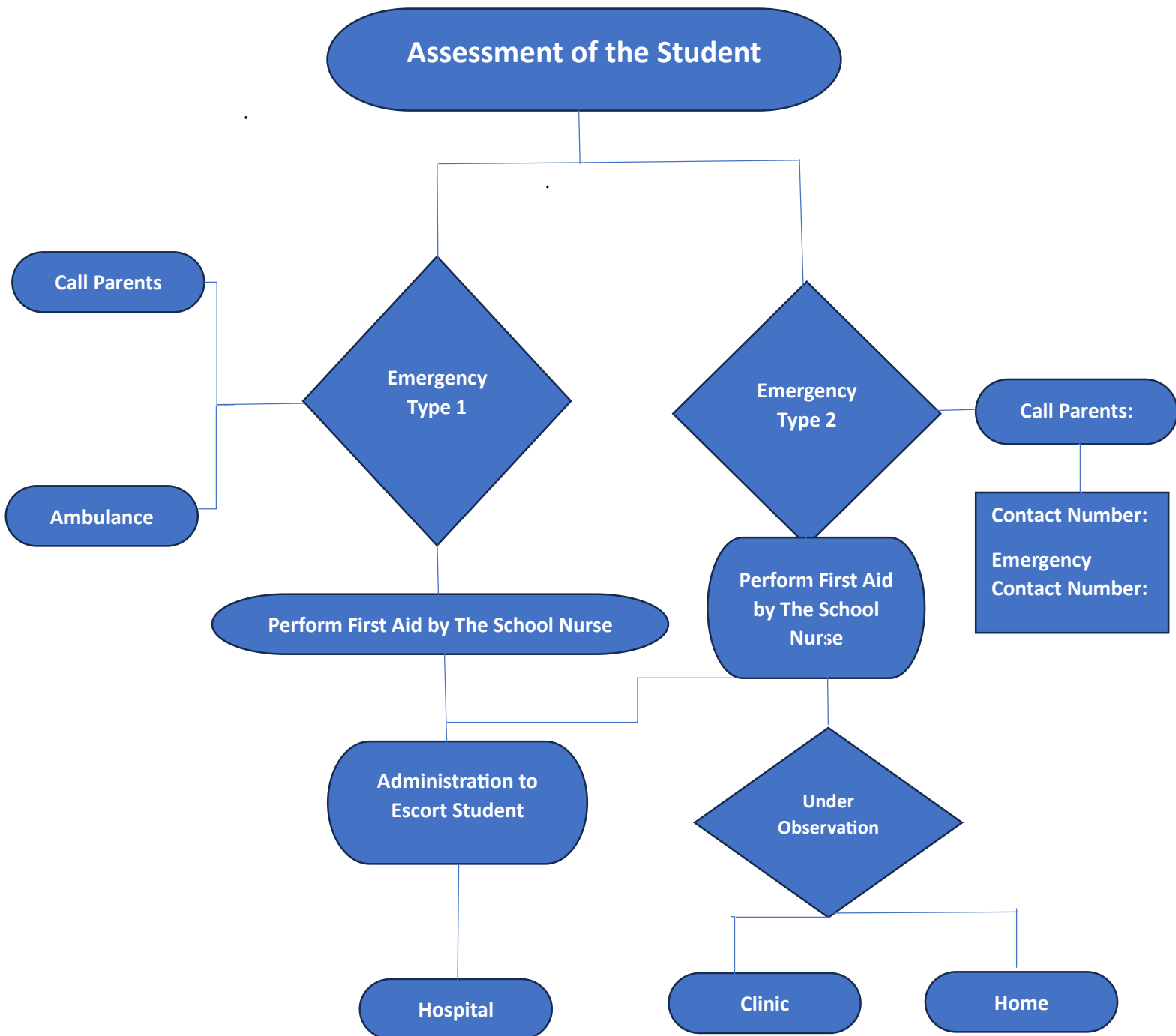




STUDENT EMERGENCY PROTOCOL FLOW CHART

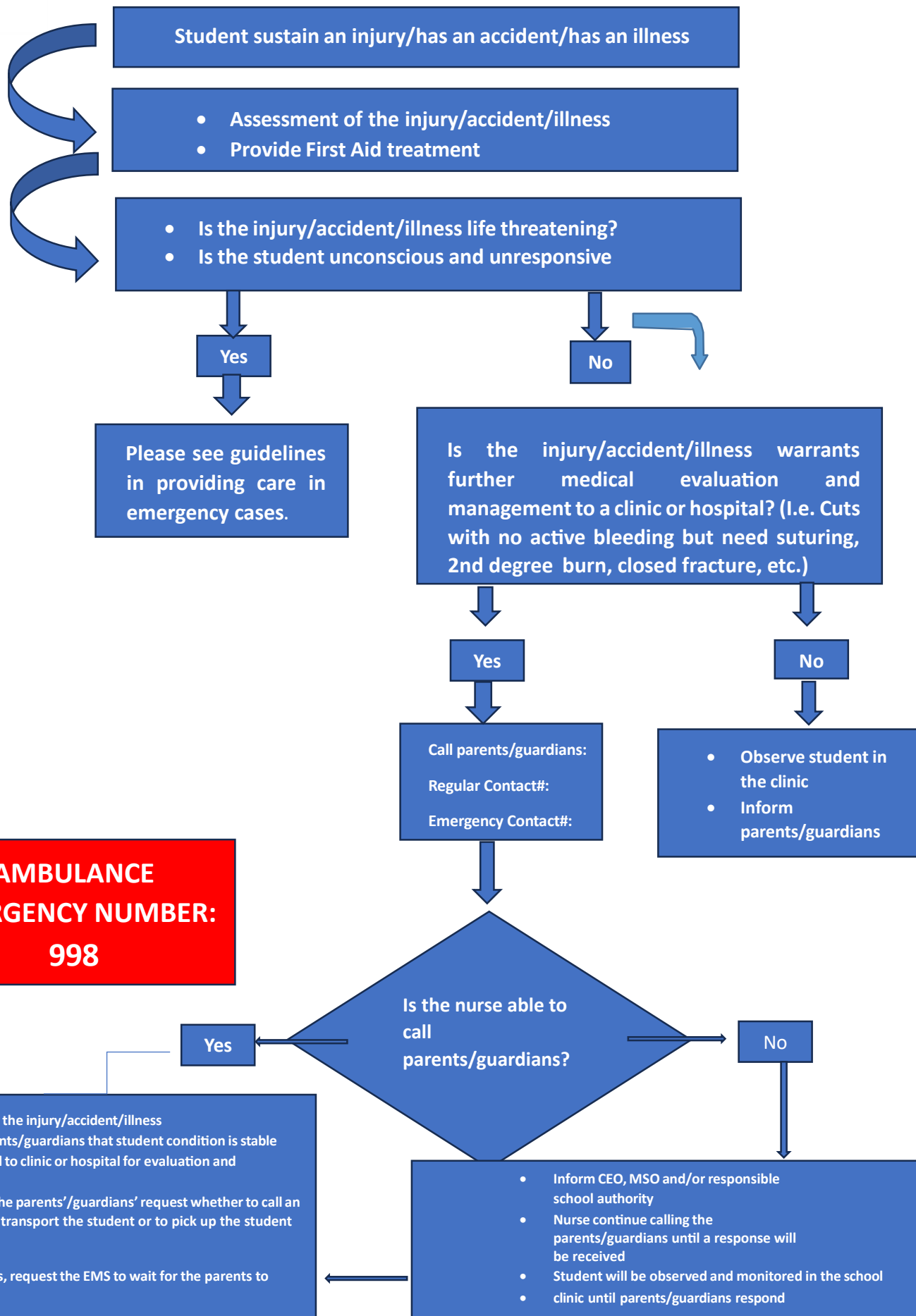


***Emergency Type 1:** High level of emergency, which needs referring to secondary care level (hospital or health center)

***Emergency Type 2:** Low level of emergency, which can be managed at school with parent/s consent.

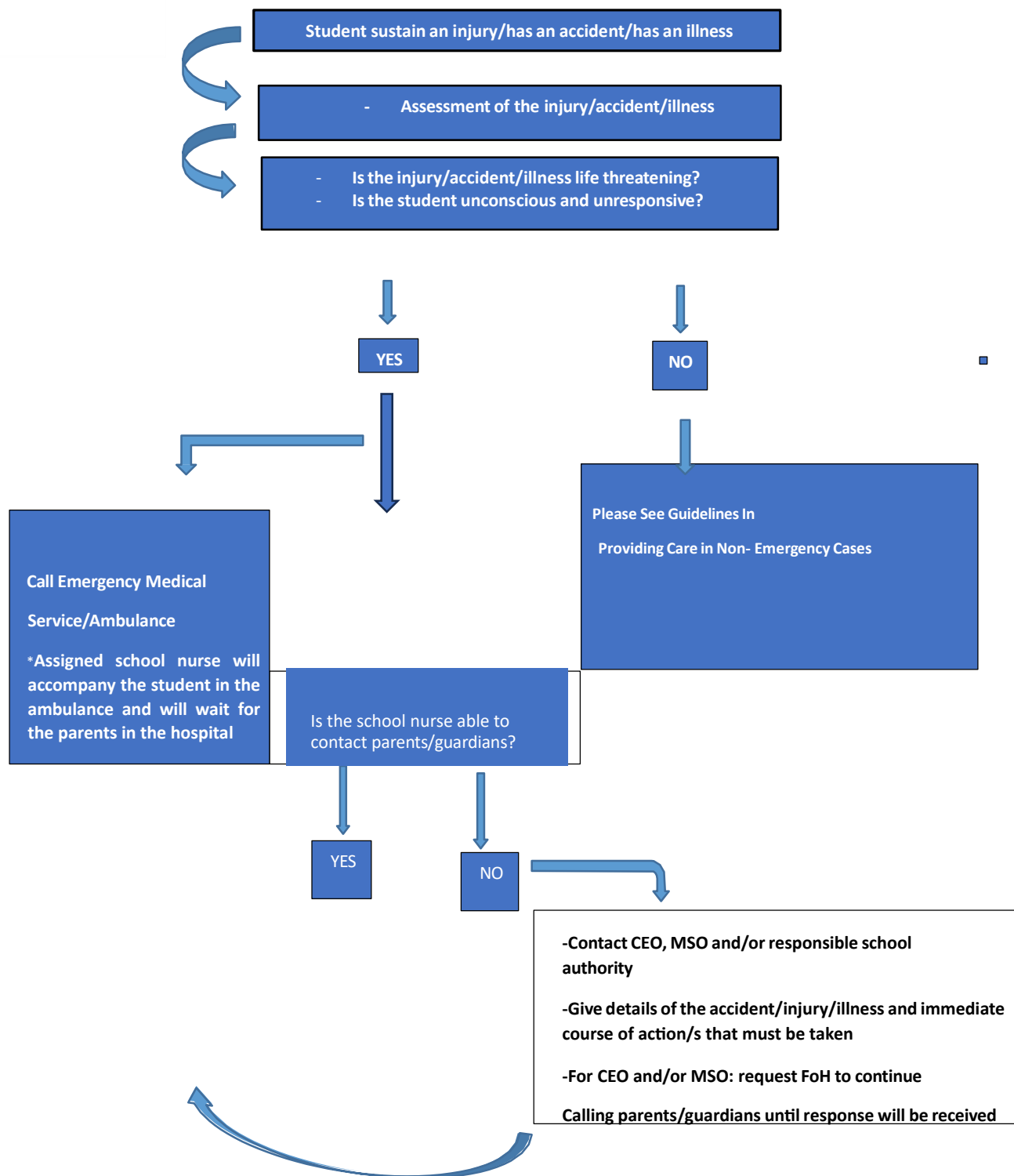


GUIDELINES (FLOWCHART) IN PROVIDING CARE IN NON-EMERGENCY CASES





GUIDELINES (FLOWCHART) IN PROVIDING CARE IN EMERGENCY CASES



Definition of term:

Life-threatening emergency cases

- A sudden and unexpected onset of a condition that threatens life, limb Alternatively, organ system that requires immediate/rapid medical intervention.
- In cases like but not limited to the following; choking, shock, anaphylaxis (Severe allergic reaction), drowning, seizure (1st time), stroke, heart attack, Deep cut/laceration with severe bleeding/blood loss,

AMBULANCE EMERGENCY NUMBER: 998